



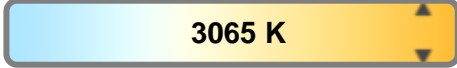
Light efficiency:



Light quality:



Color temperature:

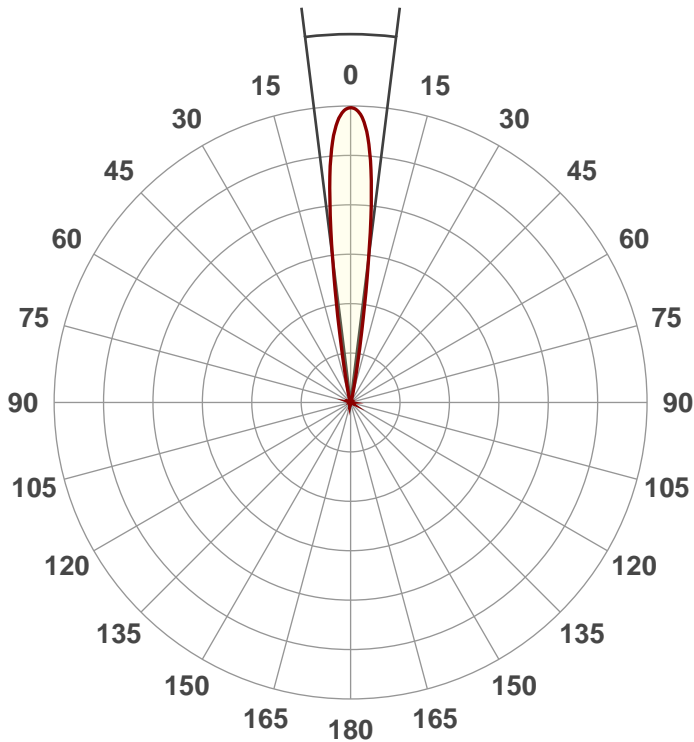


Output: 3960 lm
Peak: 61823 cd
Power: 135 W
PF: 0.99



Beam angle

14.2°

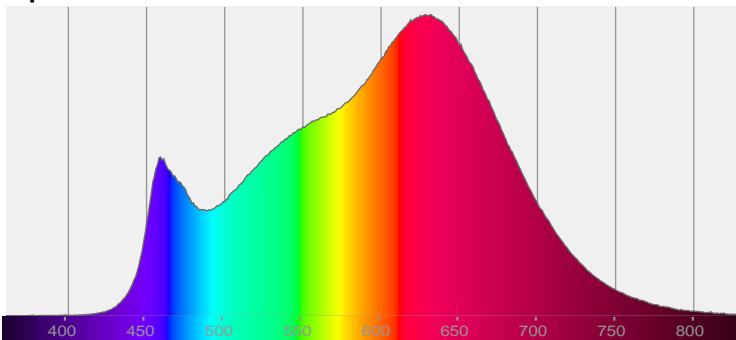


Product name:
Encore FR150Z
Item number:
Zoom In
Date:
10/9/2017
Description:

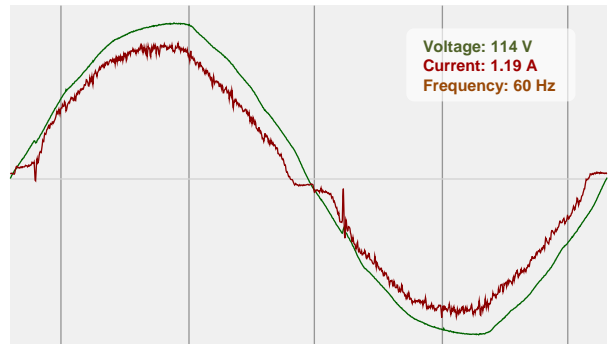


CIE 1931
x: 0.432
y: 0.402

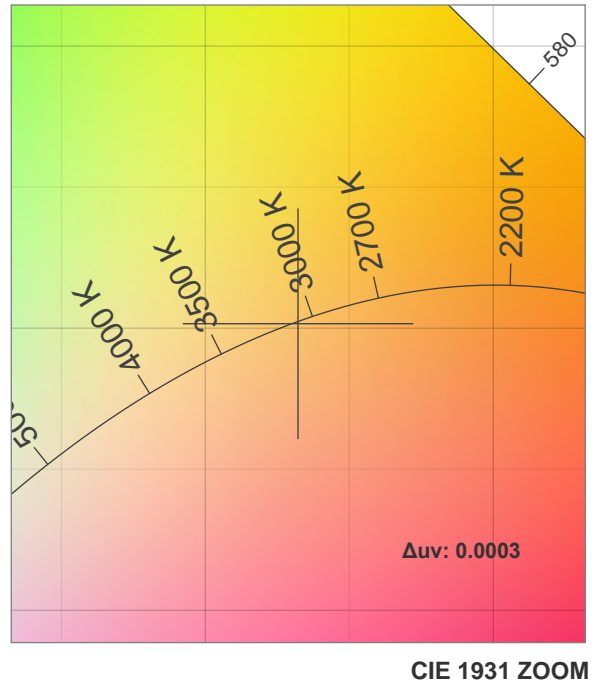
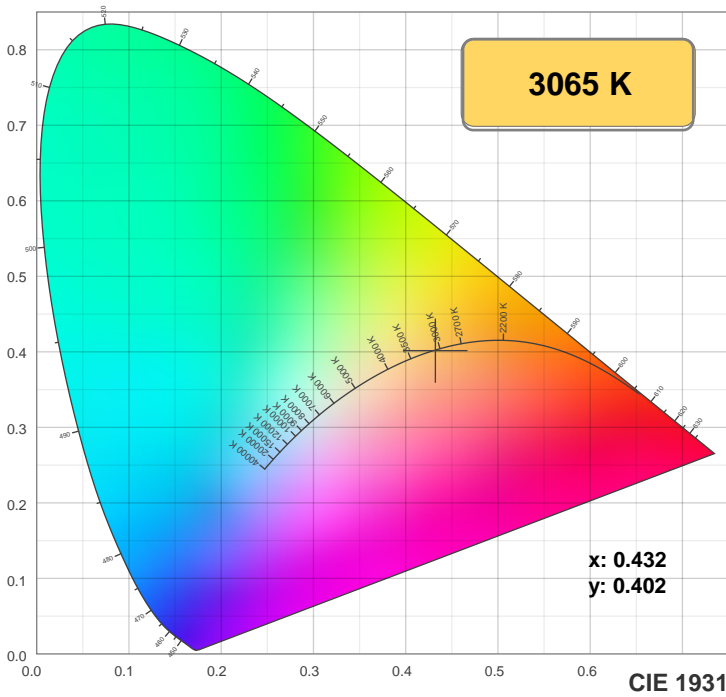
Spectra



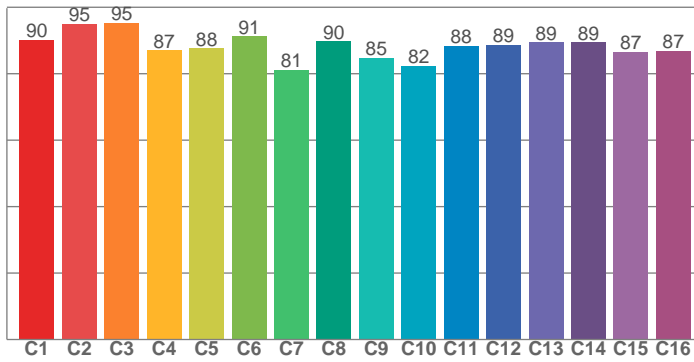
Power



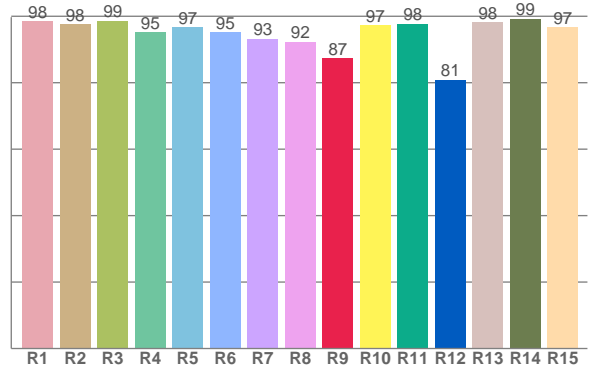
Color details



TM30: 88.6



CRI: 95.9 (R1-R8)



CRI R values, only R1-R8 are used to calculate final CRI value

R1	R2	R3	R4	R5	R6	R7	R8	R9	R10	R11	R12	R13	R14	R15
98.5	97.6	98.6	95.2	96.6	95.1	93.3	92.4	87.4	97.3	97.7	80.9	98.2	99.3	96.8

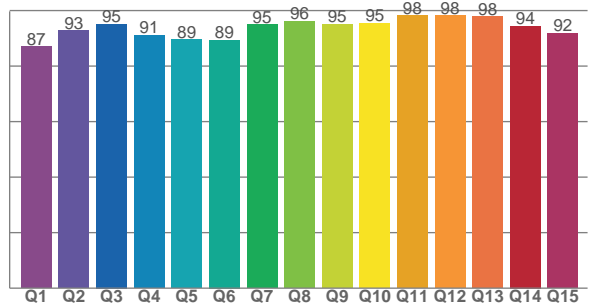
TM30 C values, 16 binned values out of total of 99 C values

C1	C2	C3	C4	C5	C6	C7	C8	C9	C10	C11	C12	C13	C14	C15	C16
90.3	95.0	95.2	87.0	87.6	91.2	81.1	89.8	84.7	82.3	88.4	88.7	89.5	89.5	86.6	86.9

CQS Q values

Q1	Q2	Q3	Q4	Q5	Q6	Q7	Q8	Q9	Q10	Q11	Q12	Q13	Q14	Q15
87.1	92.7	95.1	91.1	89.5	89.4	95.0	96.2	95.1	95.4	98.2	98.2	97.8	94.4	91.8

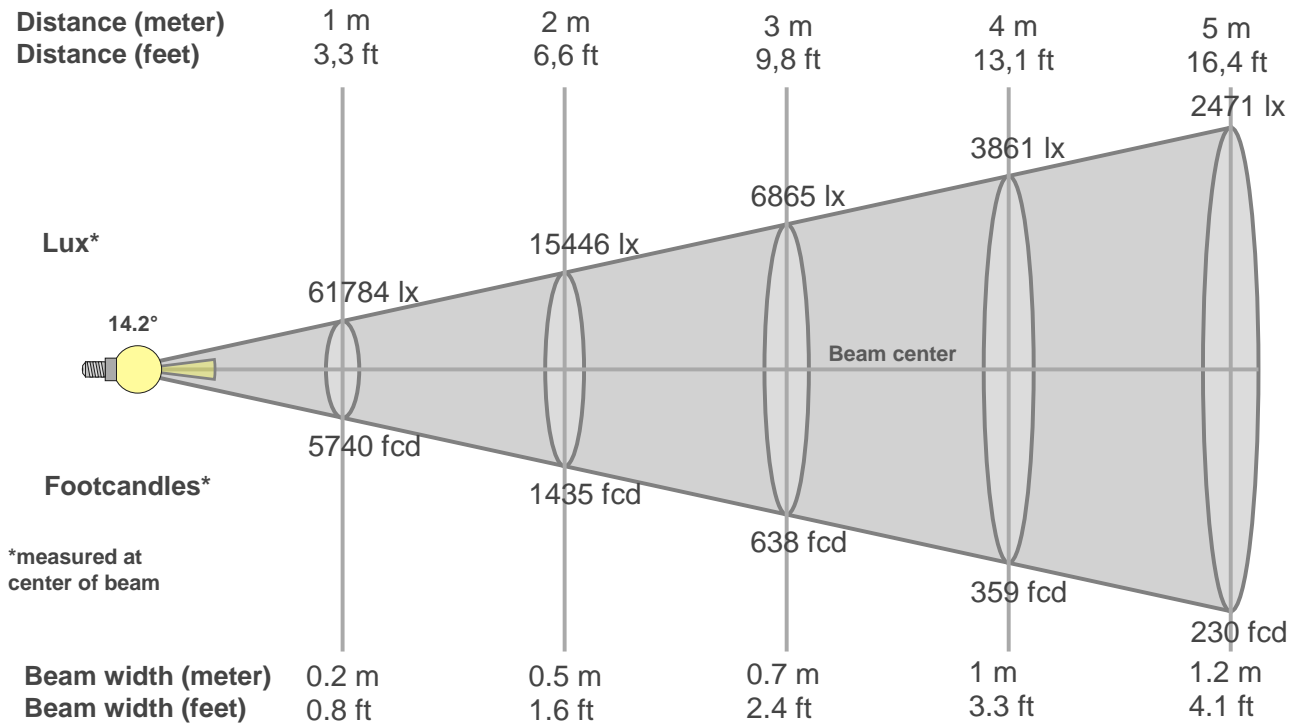
CQS: 92.7



Color parameters

Color temperature	Color rendering index	Red component	Color fidelity	Color gamut	Color quality scale	Color coordinate cie 1931	Color coordinate cie 1931	Color coordinate	Color coordinate	Color deviation from black body
CCT	CRI	CRI R9	TM30 Rf	TM30 Rg	CQS	x	y	u	v	Δuv
3065 K	95.9	87.4	88.6	96.4	92.7	0.432	0.402	0.249	0.346	0.0003

Beam details



Beam intensities from 1-20m

1m	2m	3m	4m	5m	6m	7m	8m	9m	10m	11m	12m	13m	14m	15m	16m	17m	18m	19m	20m
3.3ft	6.6ft	9.8ft	13.1ft	16.4ft	19.7ft	23ft	26.2ft	29.5ft	32.8ft	36.1ft	39.4ft	42.7ft	45.9ft	49.2ft	52.5ft	55.8ft	59.1ft	62.3ft	65.6ft
61784lx	15446lx	6865lx	3861lx	2471lx	1716lx	1261lx	965lx	763lx	618lx	511lx	429lx	366lx	315lx	275lx	241lx	214lx	191lx	171lx	154lx
5739.9fcd	1435fcd	637.8fcd	358.7fcd	229.6fcd	159.4fcd	117.1fcd	89.7fcd	70.9fcd	57.4fcd	47.4fcd	39.9fcd	34fcd	29.3fcd	25.5fcd	22.4fcd	19.9fcd	17.7fcd	15.9fcd	14.3fcd

Intensities in 0° c-plane

0°	1°	2°	3°	4°	5°	6°	7°	8°	9°	10°	11°	12°	13°	14°	15°	16°	17°	18°	19°
61.8K	61.3K	60.1K	58.0K	54.6K	49.0K	41.1K	31.9K	22.5K	14.5K	9.4K	6.0K	4.0K	2.7K	2.1K	1.6K	1.2K	1.0K	0.8K	0.6K
100%	99%	97%	94%	88%	79%	67%	52%	36%	23%	15%	10%	6%	4%	3%	3%	2%	2%	1%	1%

Intensities in 90° c-plane

0°	1°	2°	3°	4°	5°	6°	7°	8°	9°	10°	11°	12°	13°	14°	15°	16°	17°	18°	19°
61.8K	61.3K	60.1K	58.0K	54.6K	49.0K	41.1K	31.9K	22.5K	14.5K	9.4K	6.0K	4.0K	2.7K	2.1K	1.6K	1.2K	1.0K	0.8K	0.6K
100%	99%	97%	94%	88%	79%	67%	52%	36%	23%	15%	10%	6%	4%	3%	3%	2%	2%	1%	1%

Intensities in 180° c-plane

0°	1°	2°	3°	4°	5°	6°	7°	8°	9°	10°	11°	12°	13°	14°	15°	16°	17°	18°	19°
61.8K	61.5K	60.2K	57.9K	54.3K	49.0K	41.1K	31.9K	22.7K	14.7K	9.3K	6.0K	3.9K	2.7K	2.0K	1.5K	1.2K	0.9K	0.7K	0.5K
100%	99%	97%	94%	88%	79%	67%	52%	37%	24%	15%	10%	6%	4%	3%	2%	2%	1%	1%	1%

Intensities in 270° c-plane

0°	1°	2°	3°	4°	5°	6°	7°	8°	9°	10°	11°	12°	13°	14°	15°	16°	17°	18°	19°
61.8K	61.5K	60.2K	57.9K	54.3K	49.0K	41.1K	31.9K	22.7K	14.7K	9.3K	6.0K	3.9K	2.7K	2.0K	1.5K	1.2K	0.9K	0.7K	0.5K
100%	99%	97%	94%	88%	79%	67%	52%	37%	24%	15%	10%	6%	4%	3%	2%	2%	1%	1%	1%

Beam angle 50%	Field angle 10%	Cutoff angle 2,5%	Intensity ratio in 120° cone	Intensity ratio in 90° cone
14.2°	21.9°	30°	98.4%	97.6%